



CEMCO Srl
Via Banchina dell'Azoto, 15
30175 Venezia (VE) Marghera
ITALY
Tel : +39 041 88.78.526
aironeitalia.it
info@cemcoitalia.com



Serie
Model

AEU + AIU (RAA + NAR)
39-40-46

Drawing code

HF620J5980

Controller

pC00EM+

Power supply
Auxiliary supply

400V 3~ 50Hz + N
24VAC

—
—

Created by
Date

NP1
06-12-2022

Revision by
On

Index

Max power (kW)
FLA (A)
LRA (A)

see on page 2
see on page 2
—

Main protection

see on page 2

REVISION

LAST DATE BY

DATE 06-12-2022

DRAW. NP1

CHECK FF1

APPR. MM



COVER

AEU+AIU
39-40-46

HF620J5980

TOTAL SHEET 29

CONTINUE 2

SHEET 1

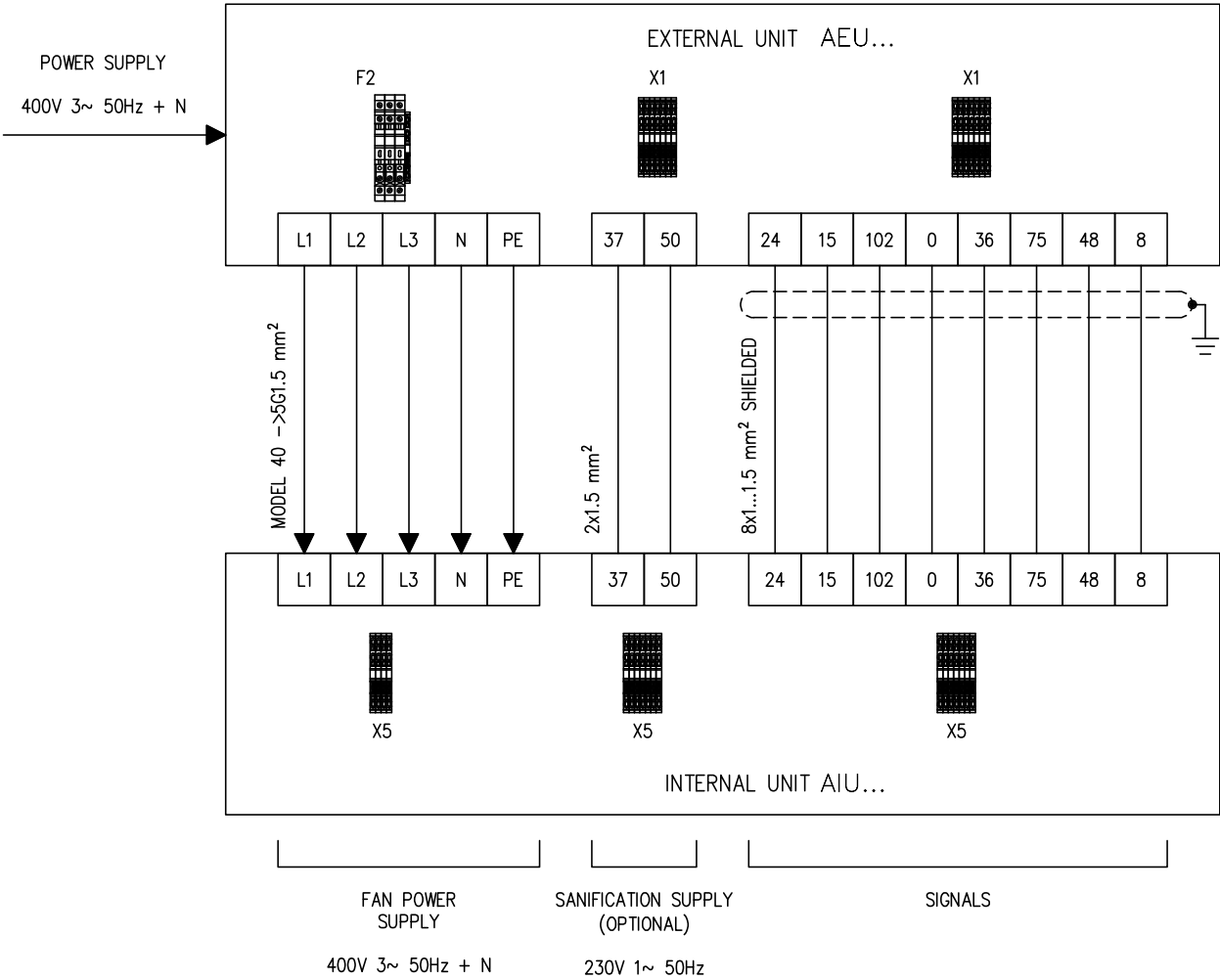
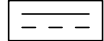
ELECTRICAL DATA

MODEL	Pmax [kW]	FLA [A]	MAIN PROTECTION [A]
39	19,3	31,4	D40
40	20,0	32,1	D40
46	21,0	32,8	D40

USE TO A RESIDUAL CURRENT
CIRCUIT BREAKER TYPE B WITH:
- ADJUSTABLE OPERATING SET
- ADJUSTABLE OPERATING TIME



UTILIZZARE UN INTERRUOTTORE
DIFFERENZIALE TIPO B CON:
- SOGLIA DI INTERVENTO TARABILE
- TEMPO DI INTERVENTO TARABILE



UBICAZIONE	DESCRIZIONE
+ECP	ELECTRICAL CONTROL PANEL
+EXT-UNIT	EXTERNAL UNIT
+INT-ROOM	INTERNAL ROOM
+INT-UNIT	INTERNAL UNIT

CUSTOMER CONNECTIONS – EXTERNAL UNIT X3

11-14	REMOTE ON-OFF
31-32-33	GENERAL ALARM SIGNAL (OPTIONAL)
51-52	SUMMER/WINTER SELECTION
81-82	USER REQUEST

CUSTOMER CONNECTIONS – INTERNAL UNIT X5

0-24-36-75-48	INTERNAL ROOM TEMPERATURE AND HUMIDITY PROBES (OPTIONAL)
---------------	--

REVISION			DATE	06-12-2022
LAST	DATE	BY	DRAW.	NP1
			CHECK	FF1
			APPR.	MM



FLCTRICAL DATA

AEU+AIU
39-40-46

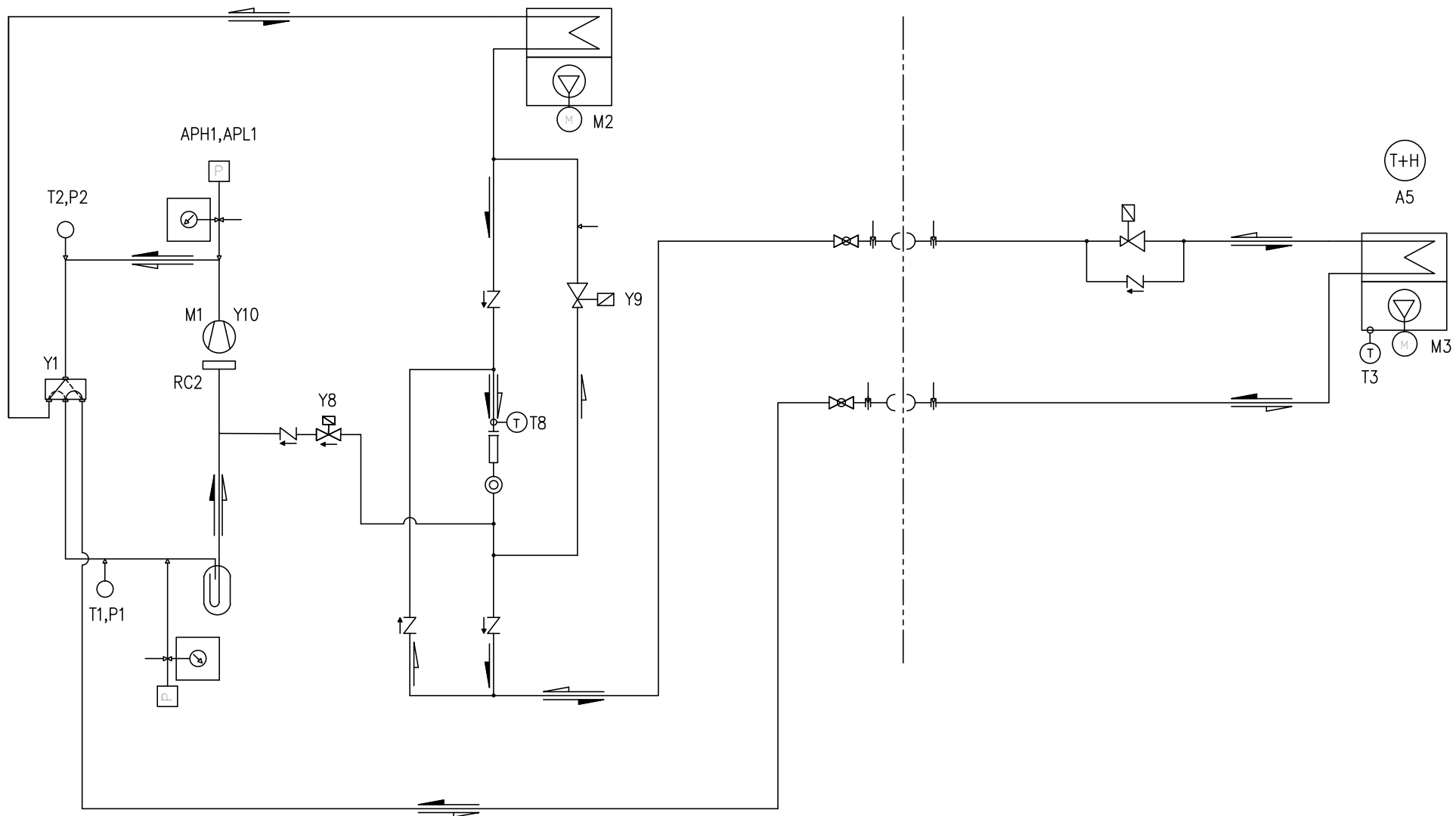
HF620J5980

TOTAL SHEET	29
CONTINUE	3
SHEET	2

COOLING CIRCUIT

External Unit

Internal Unit



REVISION

DATE 06-12-2022

LAST

DATE

BY

DRAW. NP1

CHECK FF1

APPR. MM

AirOne

COOLING CIRCUIT

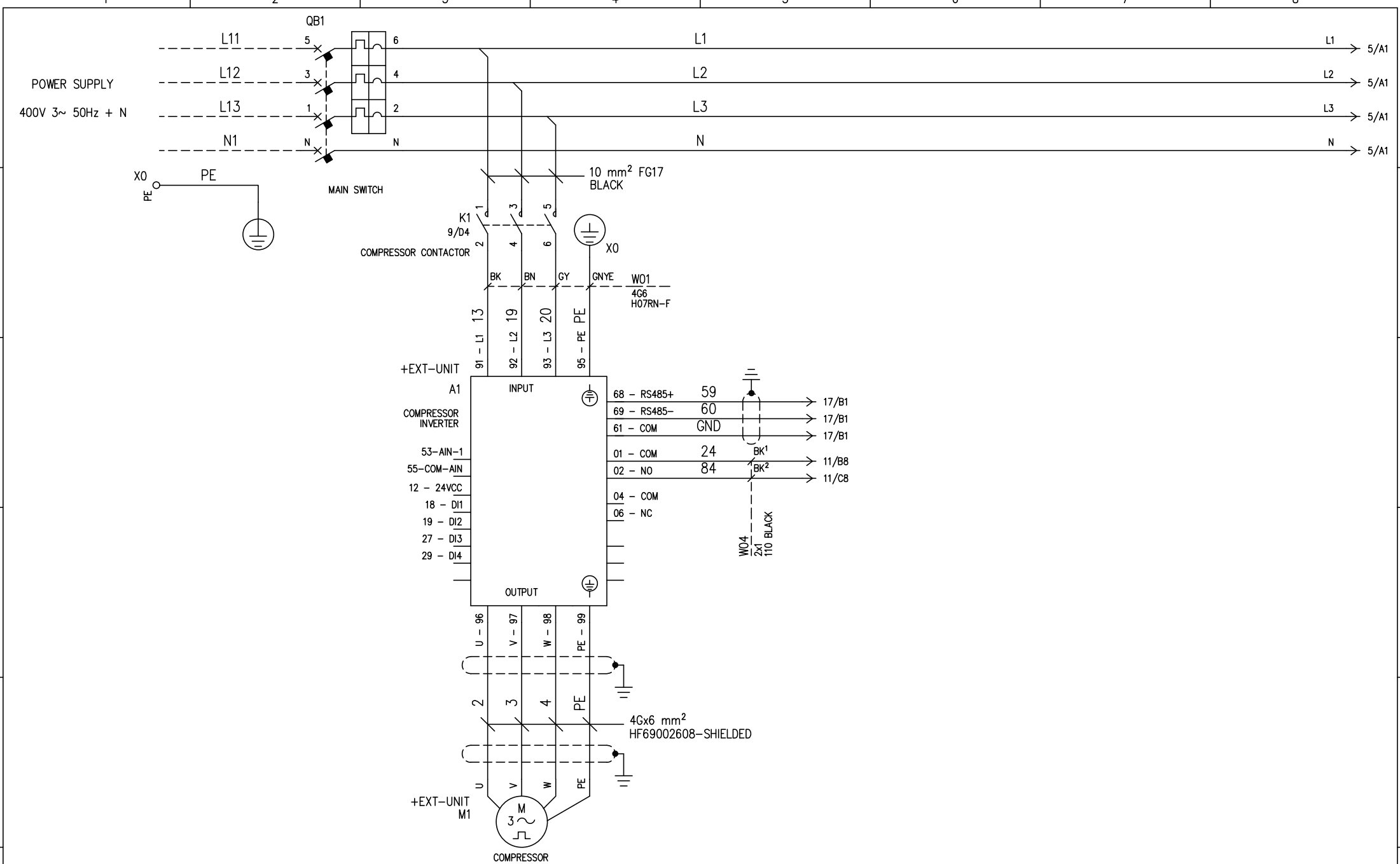
AEU+AIU
39-40-46

HF620J5980

TOTAL SHEET 29

CONTINUE 4

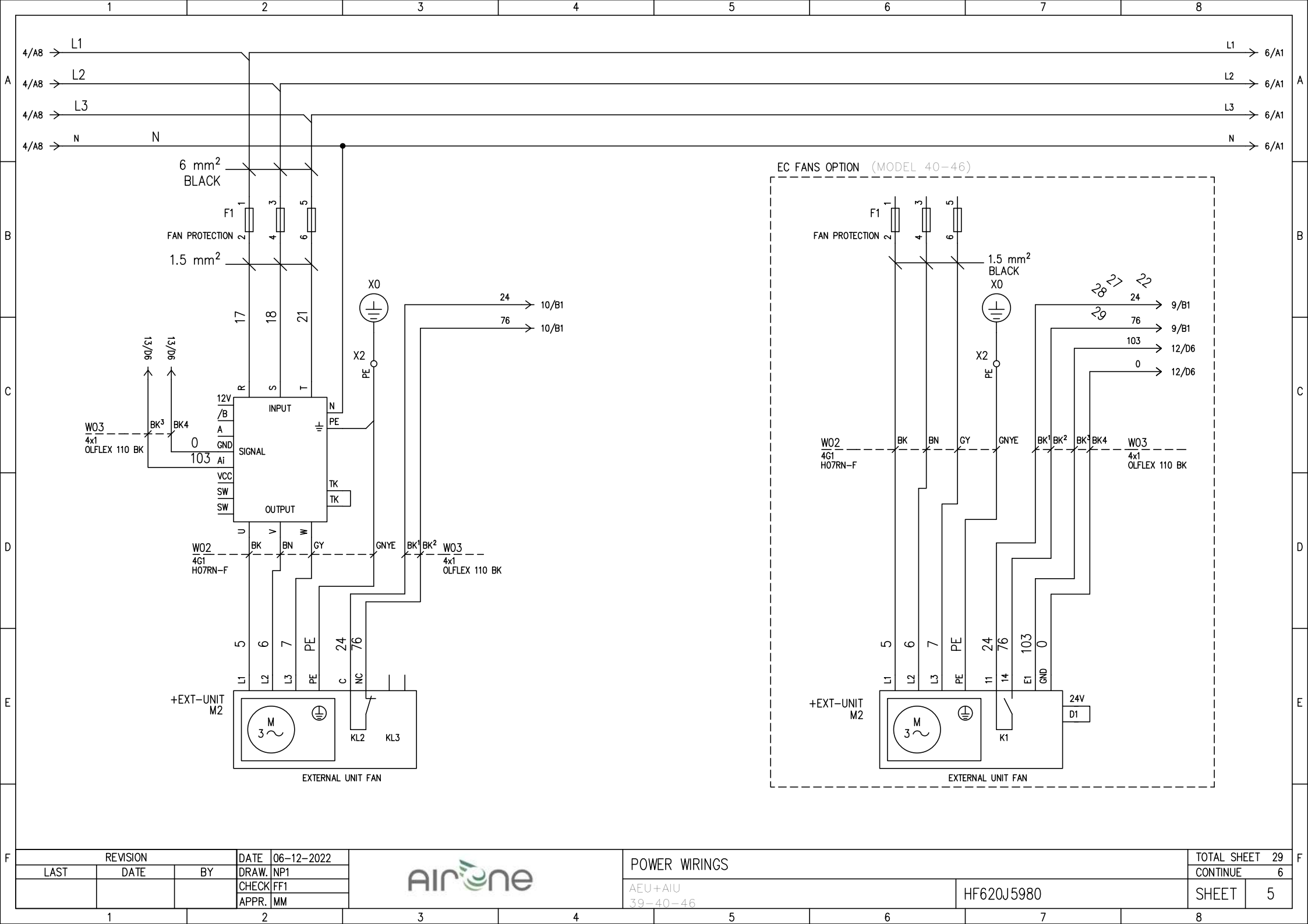
SHEET 3

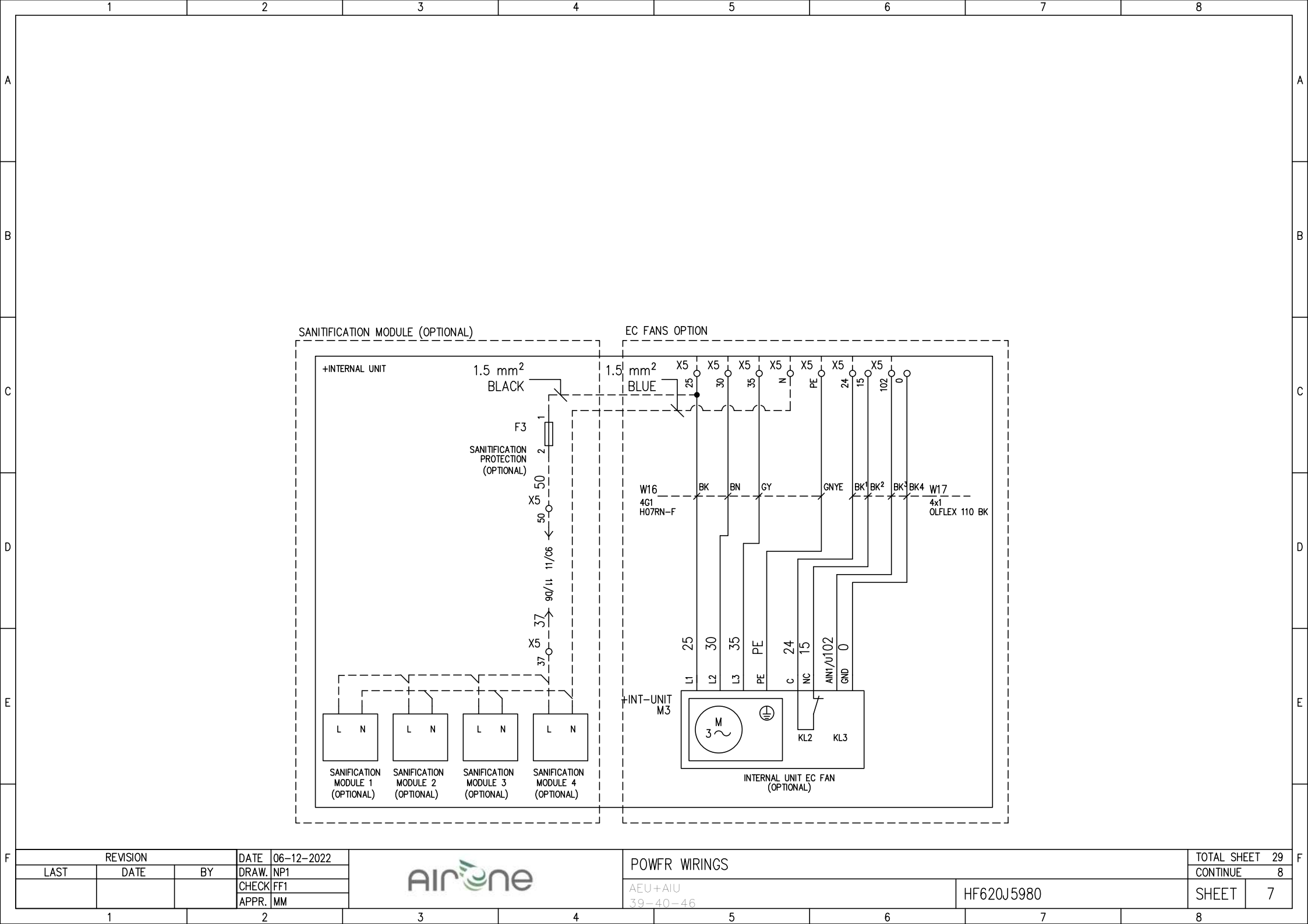


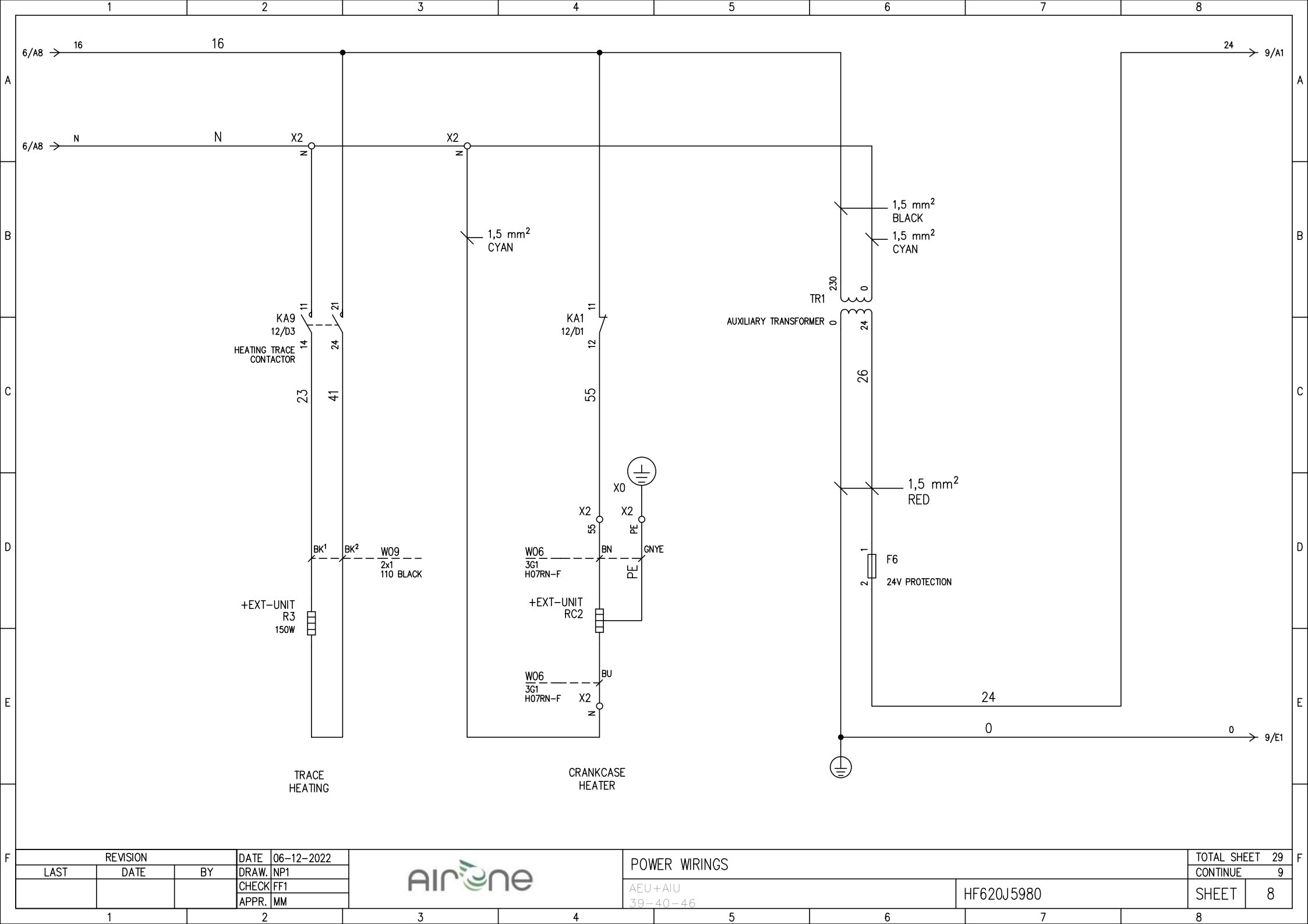
REVISION			DATE	06-12-2022	POWER WIRINGS				TOTAL SHEET	29
LAST	DATE	BY	DRAW.	NP1					CONTINUE	5
			CHECK	FF1	AEU+AIU 39-40-46				SHEET	4
			APPR.	MM						

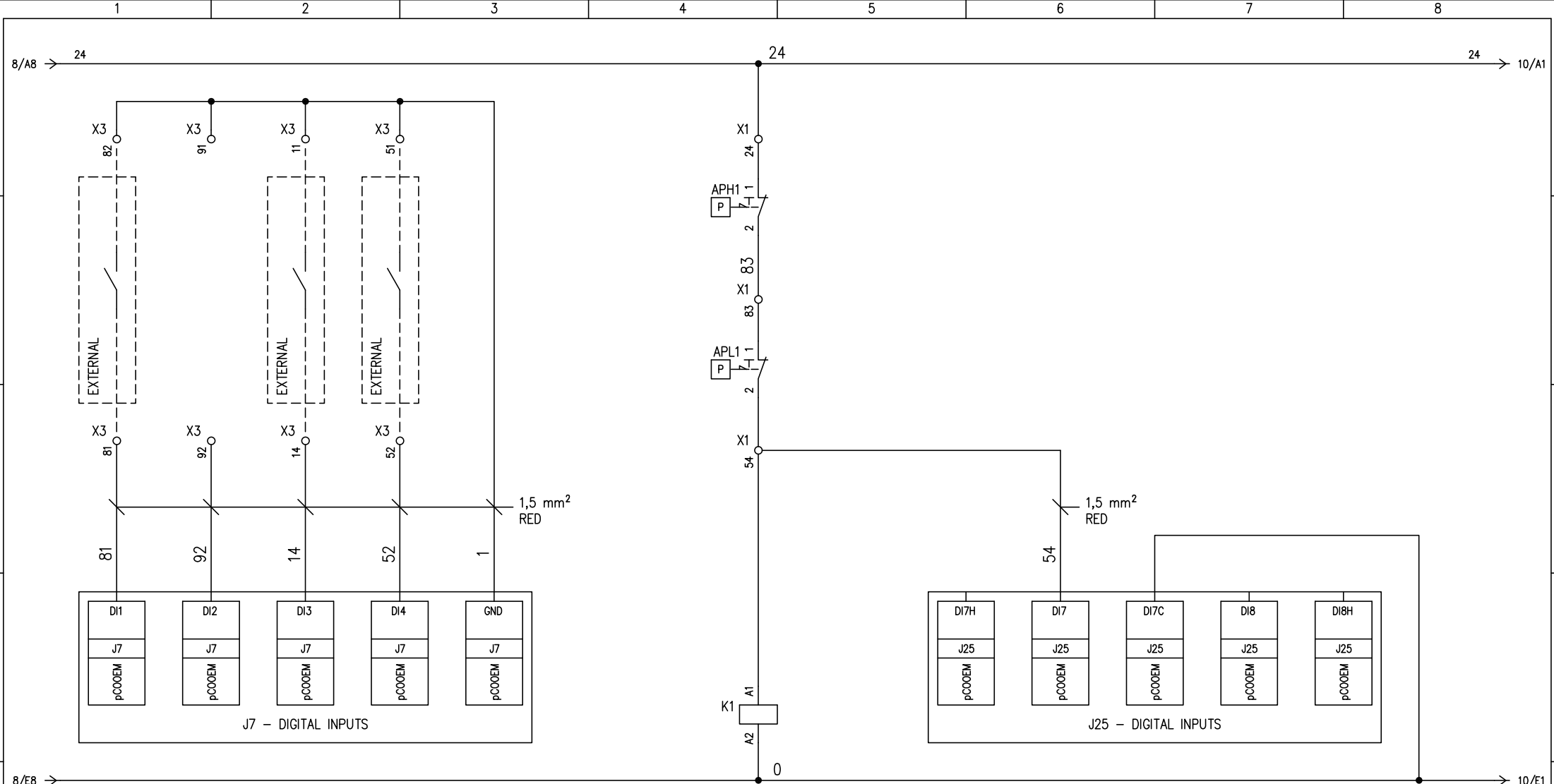


HF620J5980









8/A8 → 24

8/E8 →

10/A1 → 24

10/E1 →

0

4/B3 2 1
4/B3 4 3
4/B3 6 5

USER REQUEST

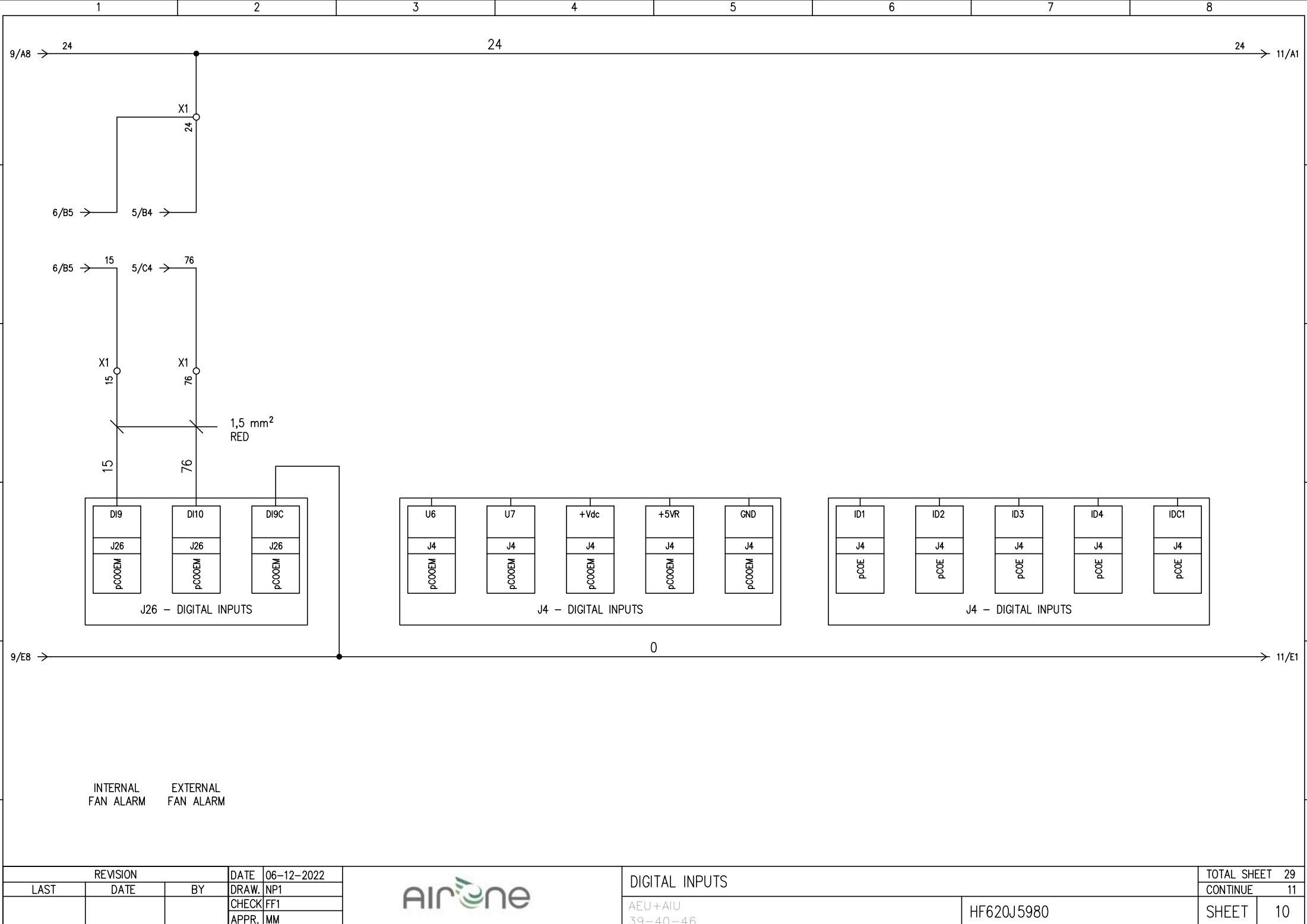
REMOTE ON-OFF

SUMMER-WINTER SELECTION

HIGH PRESSURE SWITCHES

HIGH PRESSURE SWITCH ALARM

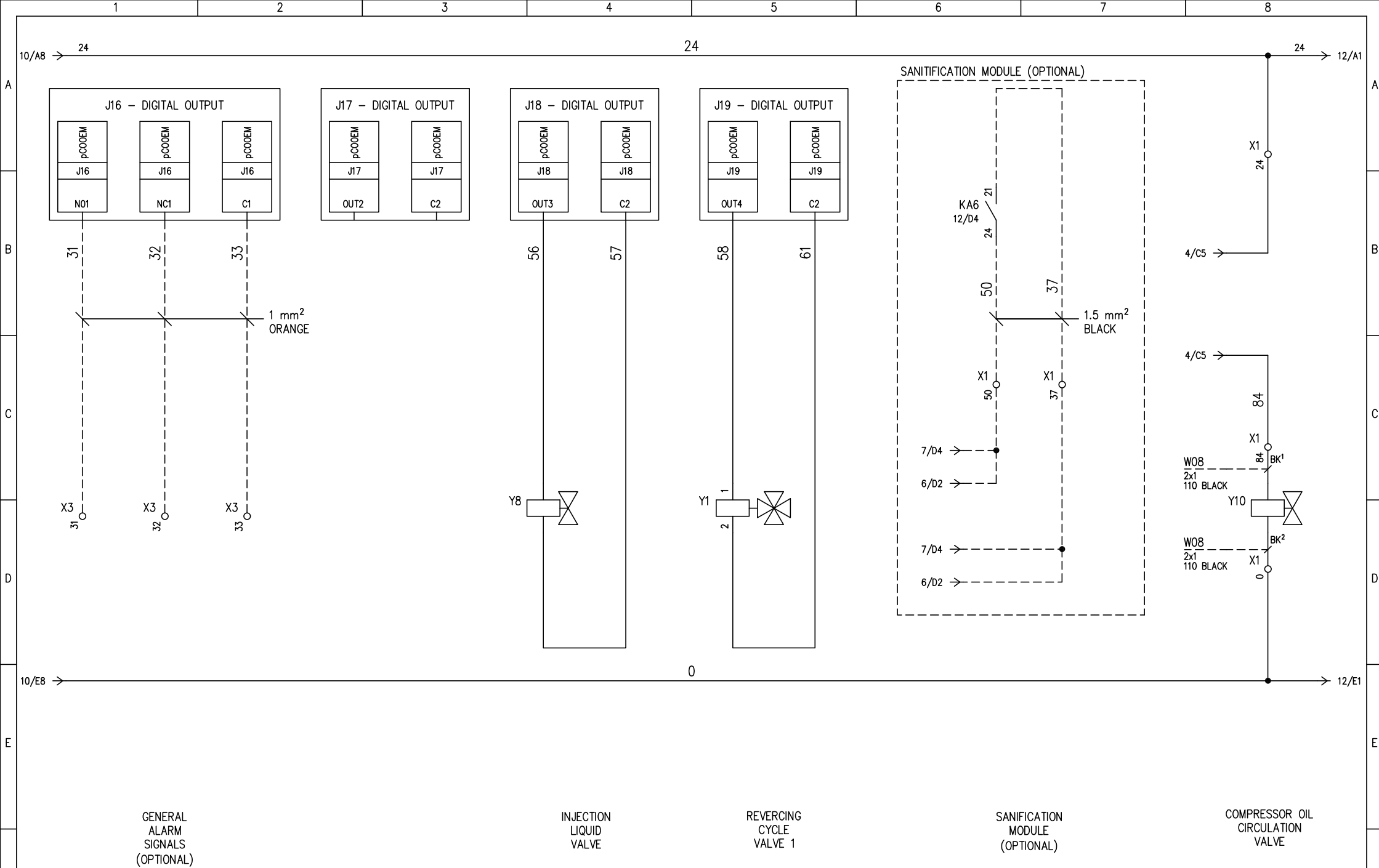
REVISION			DATE	06-12-2022	DIGITAL INPUTS				TOTAL SHEET	29
LAST	DATE	BY	DRAW.	NP1					CONTINUE	10
			CHECK	FF1					SHEET	9
			APPR.	MM						
			AirOne			AEU+AIU 39-40-46			HF620J5980	
1	2		3	4	5	6	7	8		




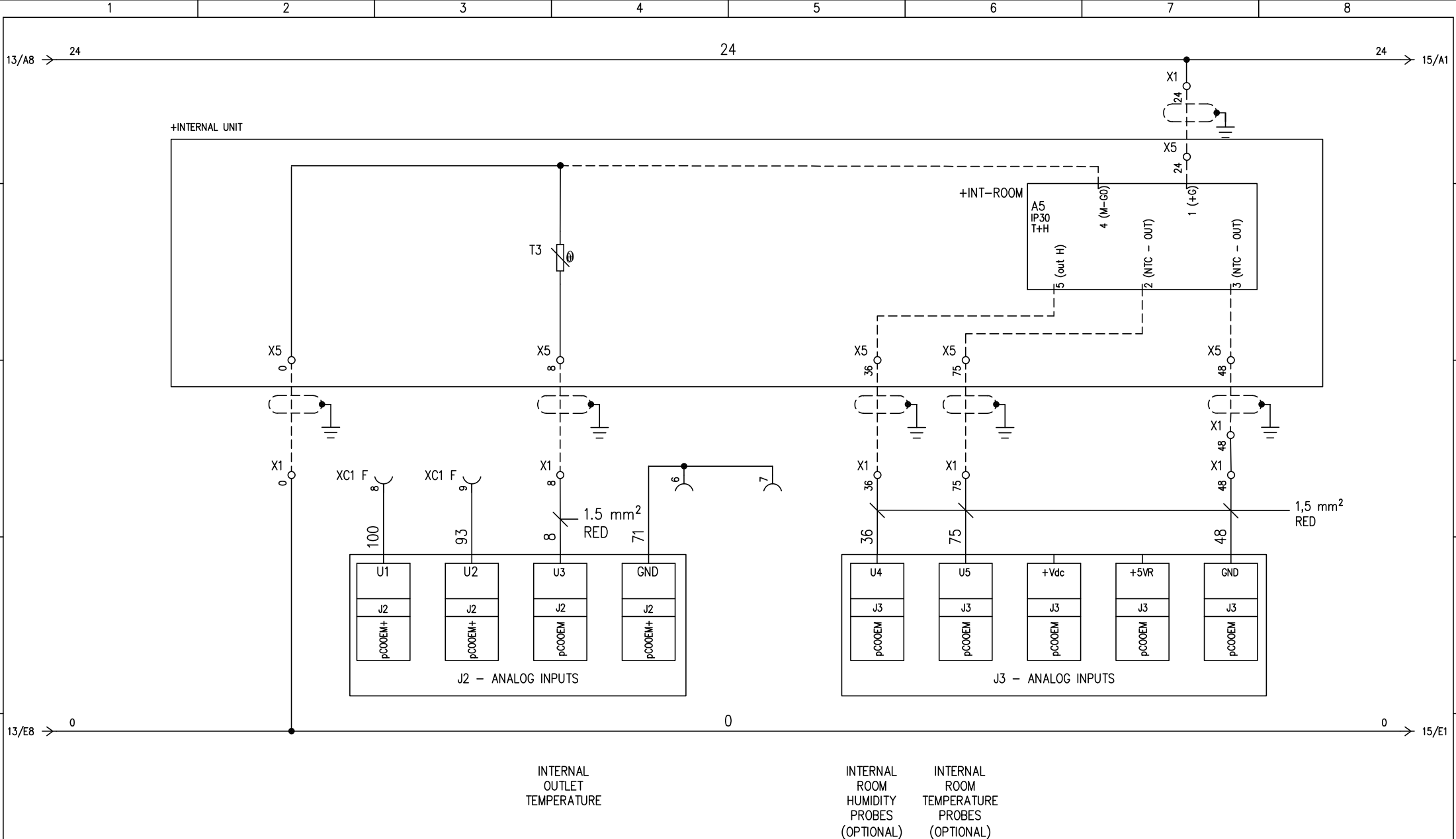
INTERNAL
FAN ALARM

EXTERNAL
FAN ALARM

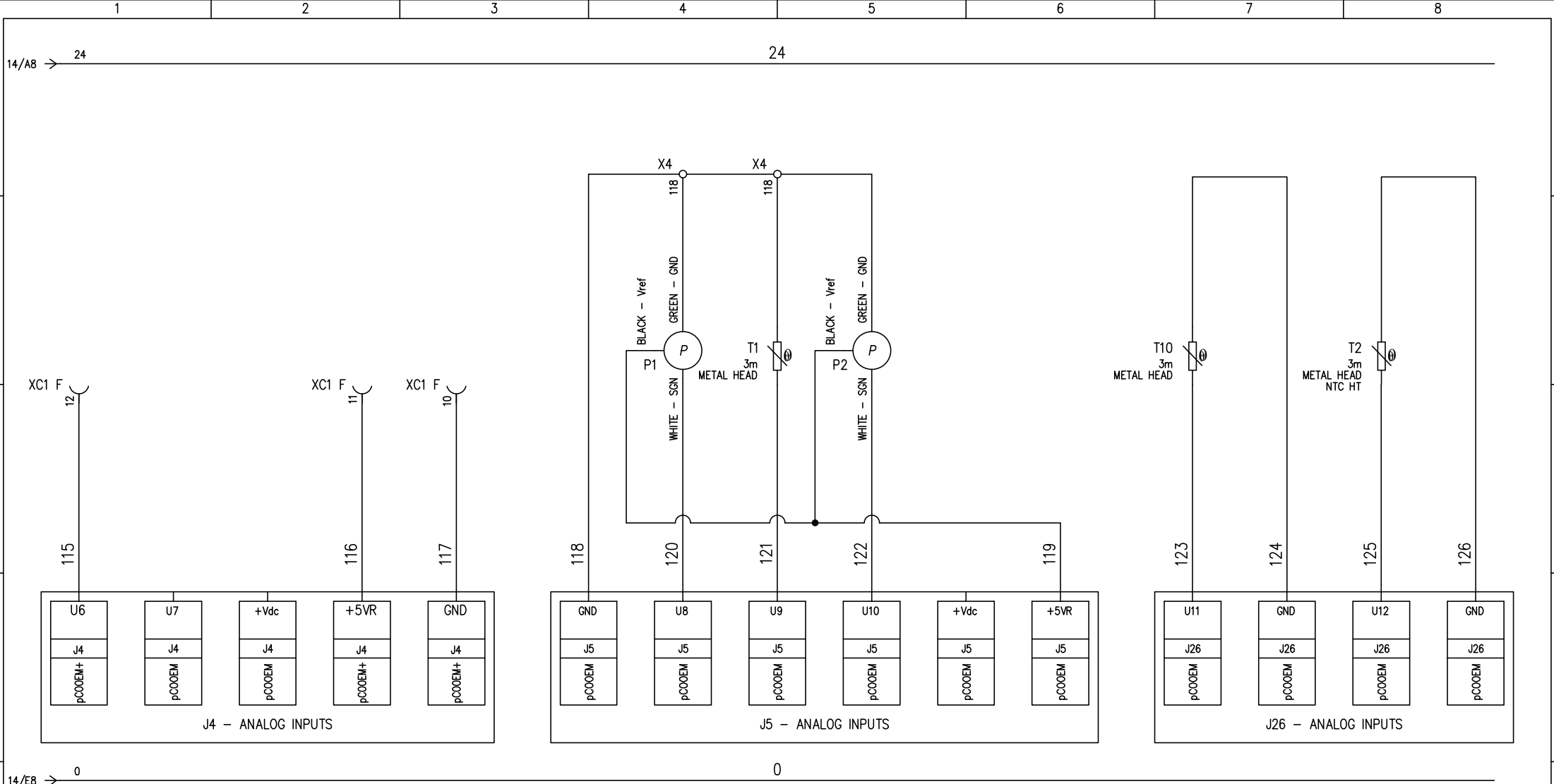
REVISION			DATE	06-12-2022	<div><div>Airone</div><div>DIGITAL INPUTS</div><div>AEU+AIU 39-40-46</div><div>HF620J5980</div></div>				TOTAL SHEET	29
LAST	DATE	BY	DRAW.	NP1					CONTINUE	11
			CHECK	FF1					SHEET	10
			APPR.	MM						



F	REVISION			DATE	06-12-2022		DIGITAL OUTPUTS			TOTAL SHEET		29	F
	LAST	DATE	BY	DRAW.	NP1					CONTINUE		12	
				CHECK	FF1		AEU+AIU 39-40-46			HF620J5980			
				APPR.	MM								



REVISION			DATE	06-12-2022	<div>Airone</div>				PROBES		TOTAL SHEET 29	
LAST	DATE	BY	DRAW.	NP1							CONTINUE 15	
			CHECK	FF1							SHEET 14	
			APPR.	MM								
			1	2	3	4	5	6	7	8		
						AEU+AIU 39-40-46			HF620J5980			



SUCTION
PRESSURE
PROBE

SUCTION
TEMPERATURE

DISCHARGE
PRESSURE
PROBE

EXTERNAL
AIR
TEMPERATURE

DISCHARGE
TEMPERATURE

REVISION			DATE	06-12-2022
LAST	DATE	BY	DRAW.	NP1
			CHECK	FF1
			APPR.	MM



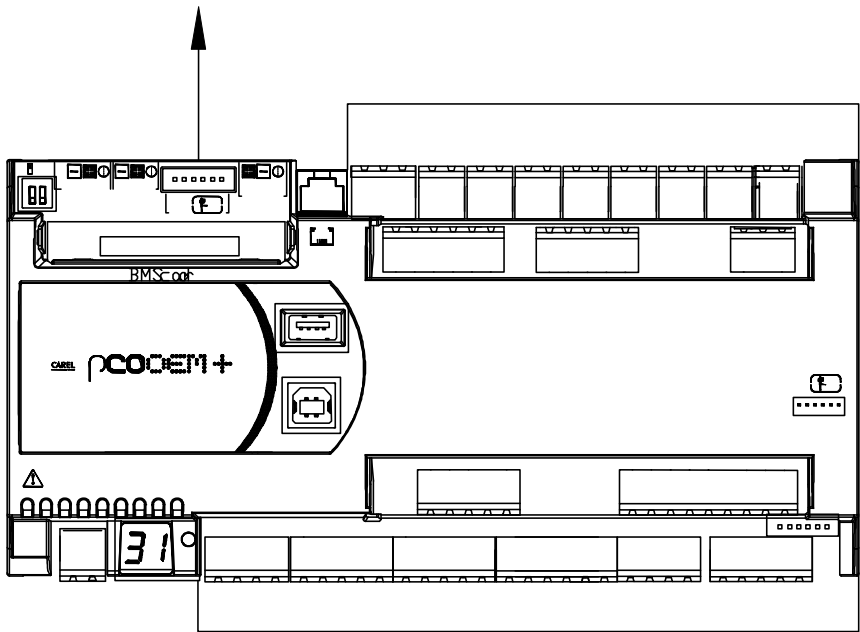
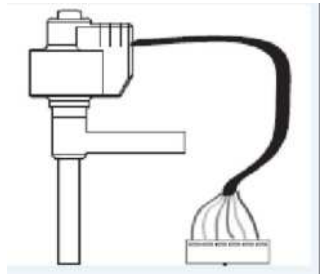
PROBES

AEU+AIU
39-40-46

HF620J5980

TOTAL SHEET	29
CONTINUE	16
SHEET	15

Y9 – ELECTRONIC EXPANSION VALVE



REVISION			DATE	06-12-2022
LAST	DATE	BY	DRAW.	NP1
			CHECK	FF1
			APPR.	MM

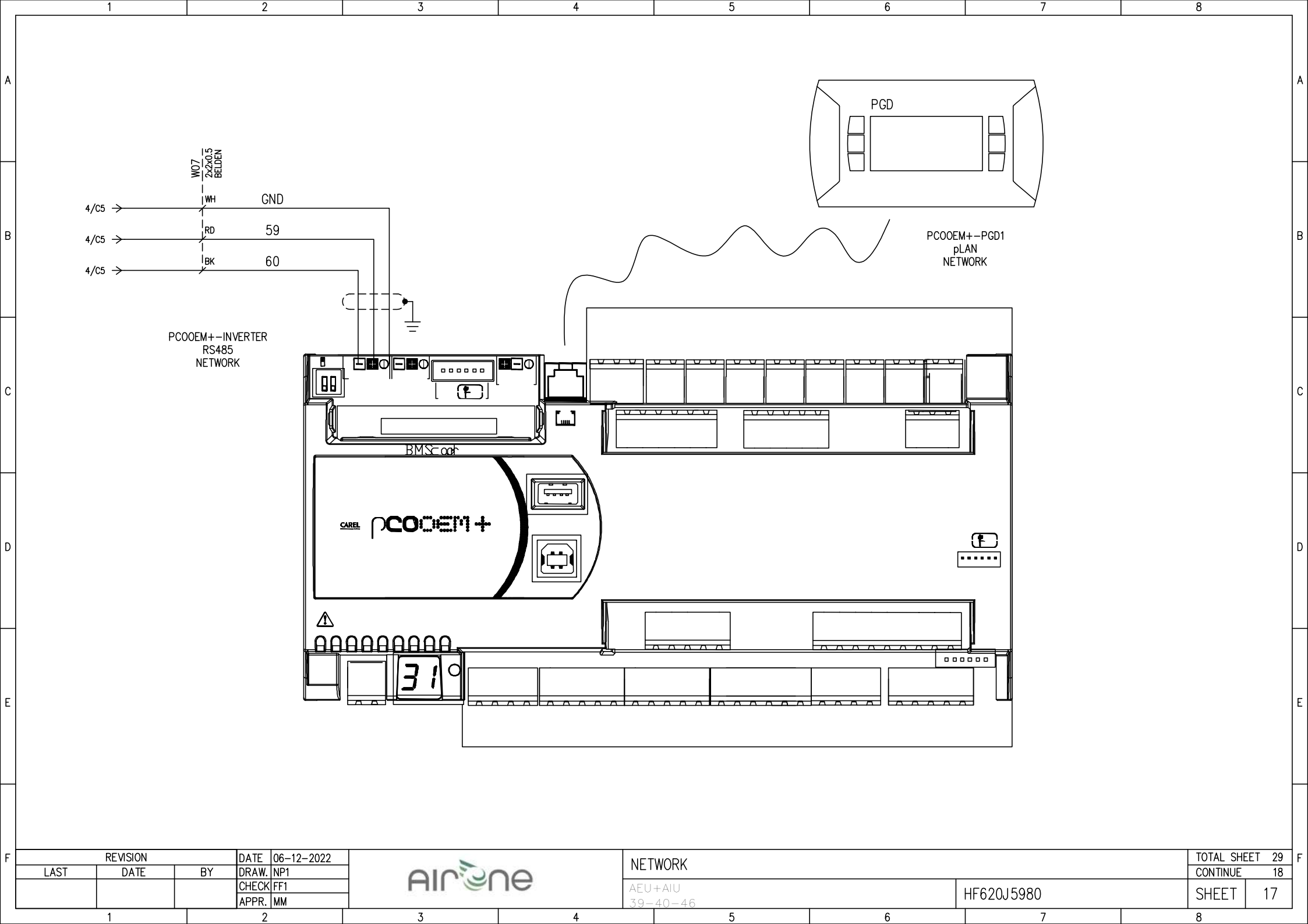



MAIN ELECTRONIC EXPANSION VALVE

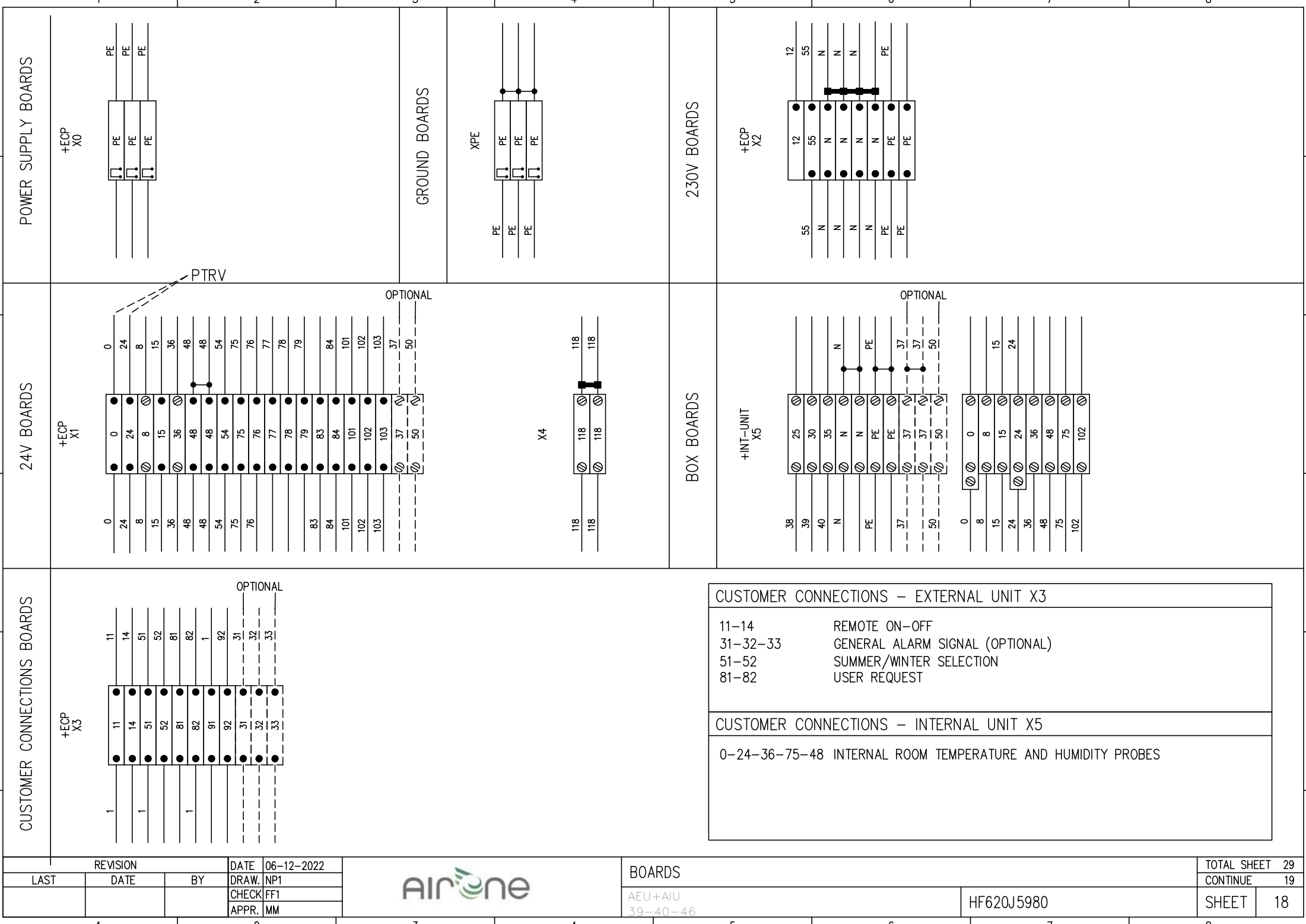
AEU+AIU
39-40-46

HF620J5980

TOTAL SHEET		29
CONTINUE		17
SHEET		16



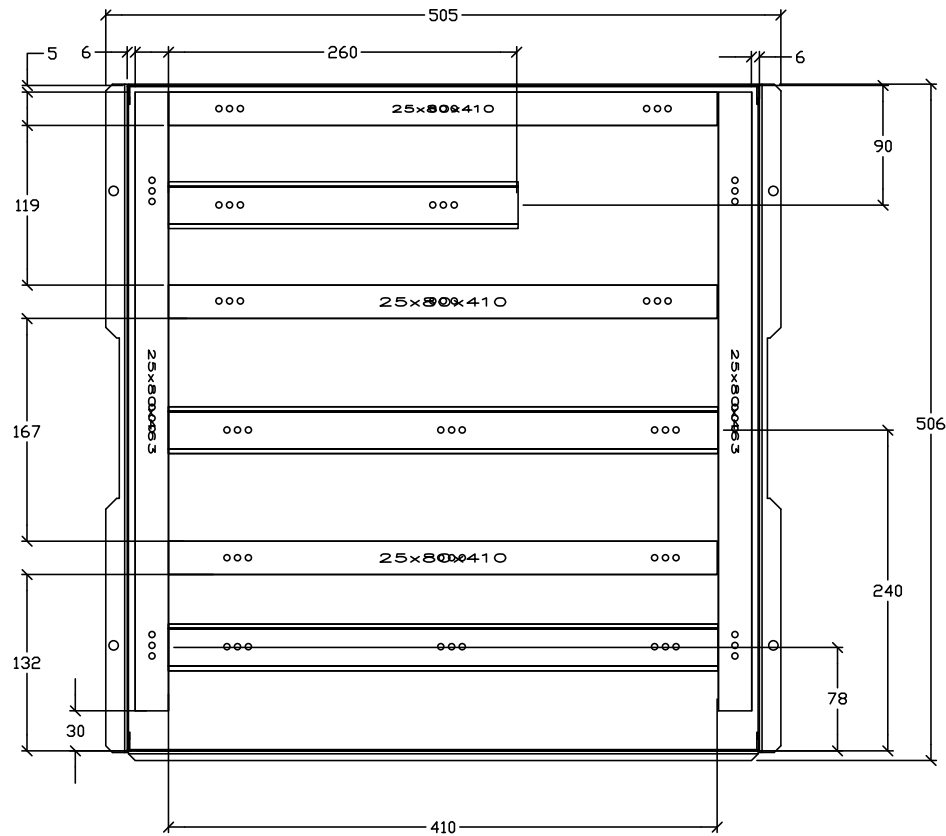
REVISION			DATE	06-12-2022		NETWORK		TOTAL SHEET	29
LAST	DATE	BY	DRAW.	NP1				CONTINUE	18
			CHECK	FF1				SHEET	17
			APPR.	MM		HF620J5980			



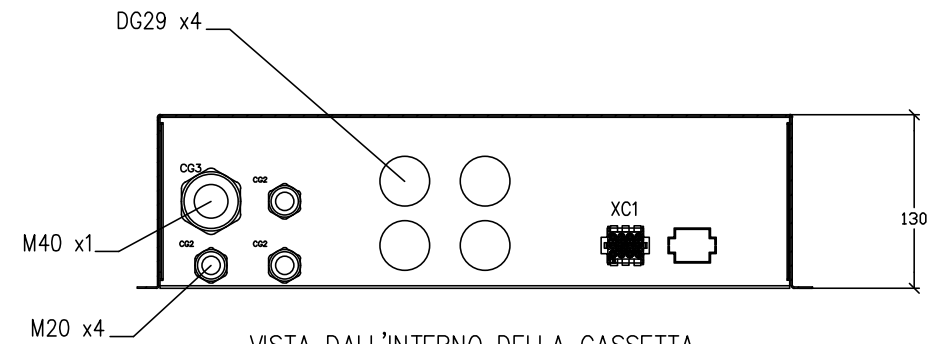
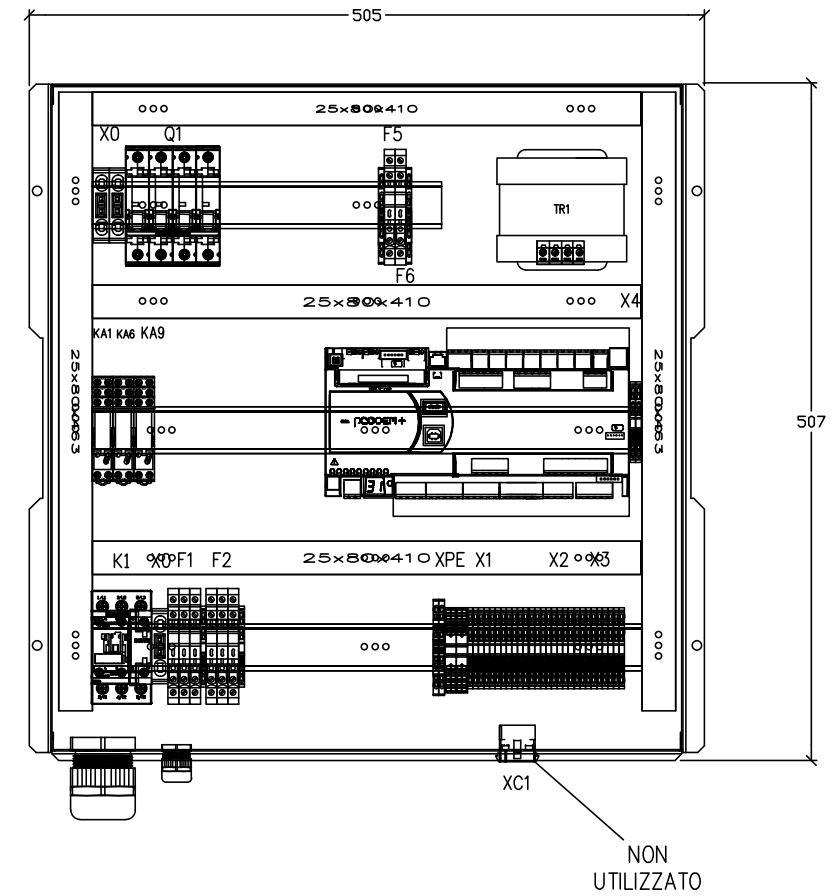
MATERIALS LIST – HF69005798									
Location	Mark	Description	Manufacturer	Item code	Article description	Quantity	M.U.	Position	
+ECP	CG2	CABLE GLAND	CEMBRE	1900.M20/X	CABLE GLAND PA6.6 IP68 M20 WITH RING	3	PCE	21/E5	
+ECP	CG3	CABLE GLAND	CEMBRE	1900.M40/X	CABLE GLAND PA6.6 IP68 M40 WITH RING	1	PCE	21/E5	
+ECP	ECP	ELECTRICAL CONTROL PANEL	HIREF	HF17027277	ELECTRICAL PANEL NAW–RAA F2 rev.C	1	PCE		
+ECP	F1	FAN PROTECTION	PHOENIX CONTACT	3004100	FUSE BOX (5x20) 500V 6,3A	6	PCE	5/B2	
+ECP	F1	FAN PROTECTION	ITALWEBER	0104306	GLASS FUSE 5x20 6.3A 250V TYPE F	6	PCE	5/B2	
+ECP	F1	FAN PROTECTION	PHOENIX CONTACT	3004207	CONNECTION ROD FOR 3004100 FUSE BOX	2	M	5/B2	
+ECP	F2	FAN PROTECTION	PHOENIX CONTACT	3004100	FUSE BOX (5x20) 500V 6,3A	3	PCE	6/B3	
+ECP	F2	FAN PROTECTION	ITALWEBER	0104306	GLASS FUSE 5x20 6.3A 250V TYPE F	3	PCE	6/B3	
+ECP	F2	FAN PROTECTION	PHOENIX CONTACT	3004207	CONNECTION ROD FOR 3004100 FUSE BOX	1	M	6/B3	
+ECP	F5	230V AUXILIARY PROTECTION	PHOENIX CONTACT	3004100	FUSE BOX (5x20) 500V 6,3A	1	PCE	6/A7	
+ECP	F5	230V AUXILIARY PROTECTION	ITALWEBER	0104306	GLASS FUSE 5x20 6.3A 250V TYPE F	1	PCE	6/A7	
+ECP	F6	24V PROTECTION	PHOENIX CONTACT	3004100	FUSE BOX (5x20) 500V 6,3A	1	PCE	8/D6	
+ECP	F6	24V PROTECTION	ITALWEBER	0105008	GLASS FUSE 5x20 8A 250V TYPE F	1	PCE	8/D6	
+ECP	K1	COMPRESSOR CONTACTOR	SIEMENS	3RT20281AB00	CONTACTOR 18.5KW 38A, 1NO+1NC, 24VAC, S0	1	PCE	9/D4	
+ECP	KA1	ON–OFF COMPRESSOR	FINDER	4052.8024+95.05	2 CONTACTS RELAY, COIL 24VAC + SOCKET	1	PCE	12/D1	
+ECP	KA6	HEATING TRACE CONTACTOR	FINDER	4052.8024+95.05	2 CONTACTS RELAY, COIL 24VAC + SOCKET	1	PCE	12/D4	
+ECP	KA9	HEATING TRACE CONTACTOR	FINDER	4052.8024+95.05	2 CONTACTS RELAY, COIL 24VAC + SOCKET	1	PCE	12/D3	
REVISION		DATE		06–12–2022		TOTAL SHEET		29	
LAST	DATE	BY	DRAW.		NP1		CONTINUE		20
			CHECK		FF1		SHEET		19
			APPR.		MM				
1		2		3		4		5	
6		7		8					

1											2											3											4											5											6											7											8																																																								
A	Location											Mark											Description											Manufacturer											Item code											Article description											Quantity											M.U.											Position											A																																	
	+ECP											TR1											AUXILIARY TRANSFORMER											TECNOCABLAGGI											TCN150072											TRANSFORMER 200VA IN: 400–230V/OUT: 24V											1											PCE											8/B6																																												
B	+ECP											X0																						PHOENIX CONTACT											3044212											UT 16–PE GROUND TERMINAL BLOCK											3											PCE											4/B1											B																																	
	+ECP											X1																						WAGO											2001–1301											3–CONDUCTOR THROUGH TERMINAL BLOCK, 1.5 mm ²											16											PCE											11/C8																																												
	+ECP											X1																						PHOENIX CONTACT											3270157											16 COND. THROUGH TERMINAL BLOCK, 1.5mmq											2											PCE											11/D8																																												
	+ECP											X2																						WAGO											2001–1301											3–CONDUCTOR THROUGH TERMINAL BLOCK, 1.5 mm ²											6											PCE											8/D4																																												
C	+ECP											X2																						WAGO											2001–1307											3–CONDUCTOR THROUGH TERMINAL BLOCK 1,5mm ² PE											3											PCE											8/D4											C																																	
	+ECP											X3																						WAGO											2001–1301											3–CONDUCTOR THROUGH TERMINAL BLOCK, 1.5 mm ²											8											PCE											9/A1																																												
	+ECP											XC1											KIT CAVI PT. IDRAULICA CONN.FEMMINA																						HF69006050											KIT CAVI PT. IDRAULICA CONN.FEMMINA											1											PCE																																																							
	+ECP											XPE											GROUND BOARDS (PE)											PHOENIX CONTACT											3031209											ST 1,5–QUATTRO–PE Morsetto passante a molla											3											PCE																																																							
D	NOTES											Locations: +ECP.											Functions: generica.																																																																																								D																						
E	+ECP											X1																						WAGO											2001–1301											3–CONDUCTOR THROUGH TERMINAL BLOCK, 1.5 mm ²											2											PCE											12/C7											E																																	
	+ECP											KA10											SANIFICATION MODULE RELAY											FINDER											HF40000251 + HF40000253 95.75.SMA+4052280240000											RELAY+SOCKET											1											PCE											12/D4																																												
	+INT–UNIT											X5																						WAGO											2001–1301											3–CONDUCTOR THROUGH TERMINAL BLOCK, 1.5 mm ²											3											PCE											6/D4																																												
	+INT–UNIT											F3											SANIFICATION PROTECTION											PHOENIX CONTACT											3004100											FUSE BOX (5x20) 500V 6,3A											1											PCE											6/C4																																												
	+INT–UNIT											F3											SANIFICATION PROTECTION											ITALWEBER											0102002											GLASS FUSE 5x20 2A 250V TYPE F											1											PCE											6/C4																																												
F																																																																																																																																					F
	REVISION											DATE											06–12–2022																						Components list											TOTAL SHEET											29																																																																		
	LAST											DATE											BY											DRAW.											NP1																						CONTINUE											21																																																							
																																		CHECK											FF1																																																																																								
																																		APPR.											MM																																																																																								
1											2											3											4											5											6											7											8																																																								

LAYOUT GUIDE/CANALE



LAYOUT COMPONENTI



VISTA DALL'INTERNO DELLA CASSETTA

REVISION		DATE	06-12-2022
DATE	BY	DRAW.	NP1
		CHECK	FF1
		APPR.	MM

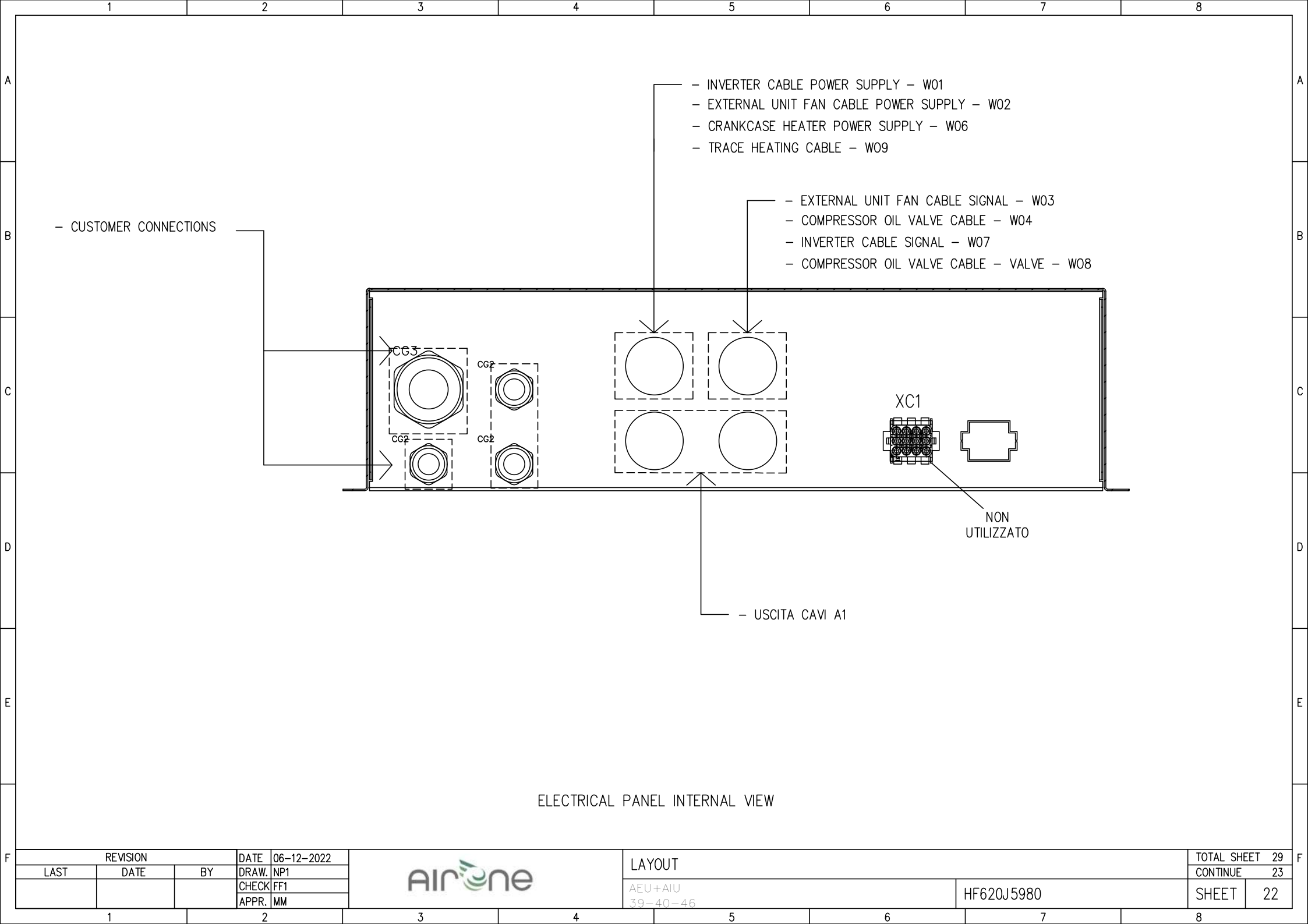



LAYOUT

AEU+AIU
39-40-46

HF620J5980

TOTAL SHEET	29
CONTINUE	22
SHEET	21



REVISION			DATE	06-12-2022		LAYOUT		TOTAL SHEET	29
LAST	DATE	BY	DRAW.	NP1				CONTINUE	23
			CHECK	FF1				SHEET	22
			APPR.	MM					

1

2

3

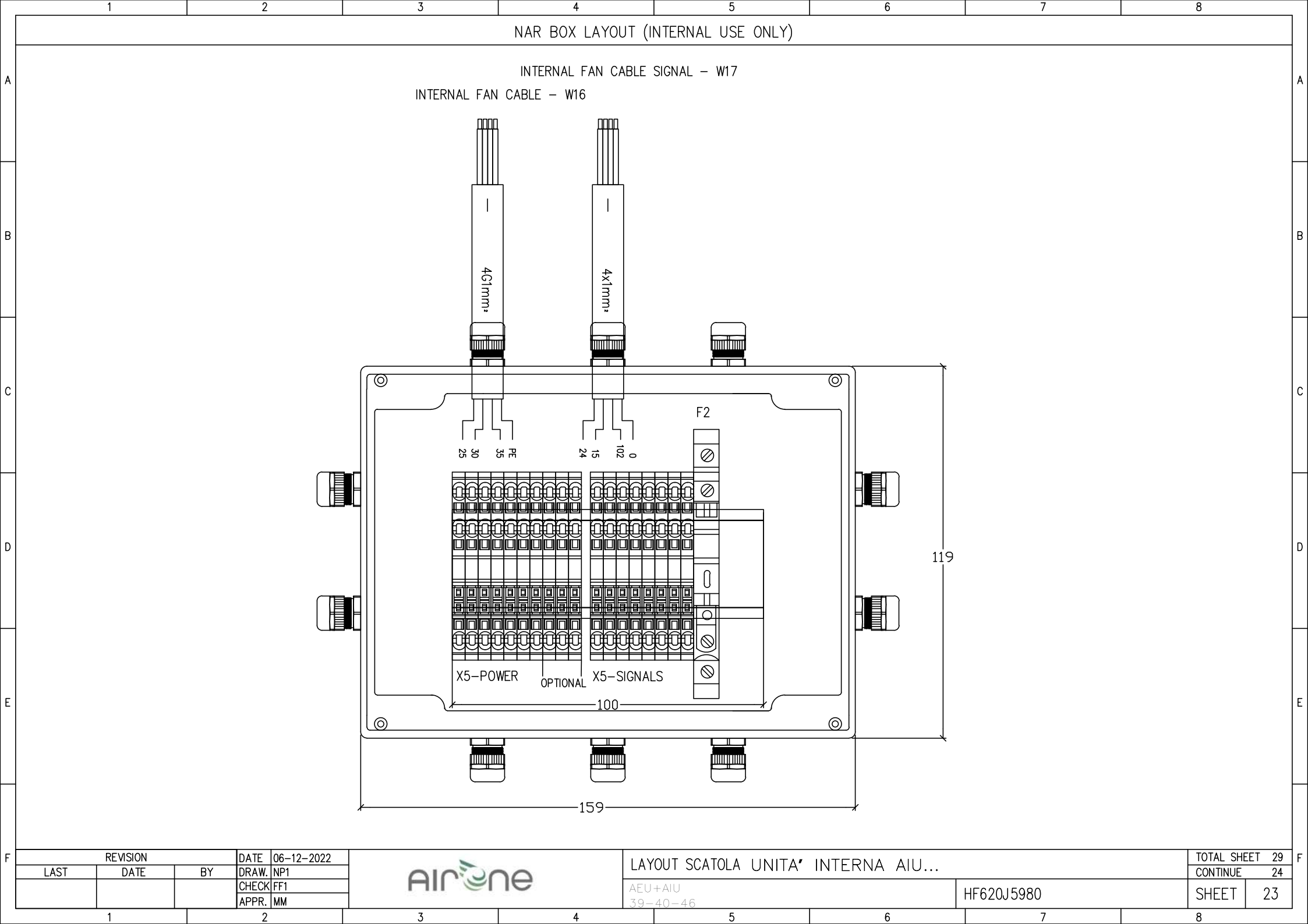
4

5

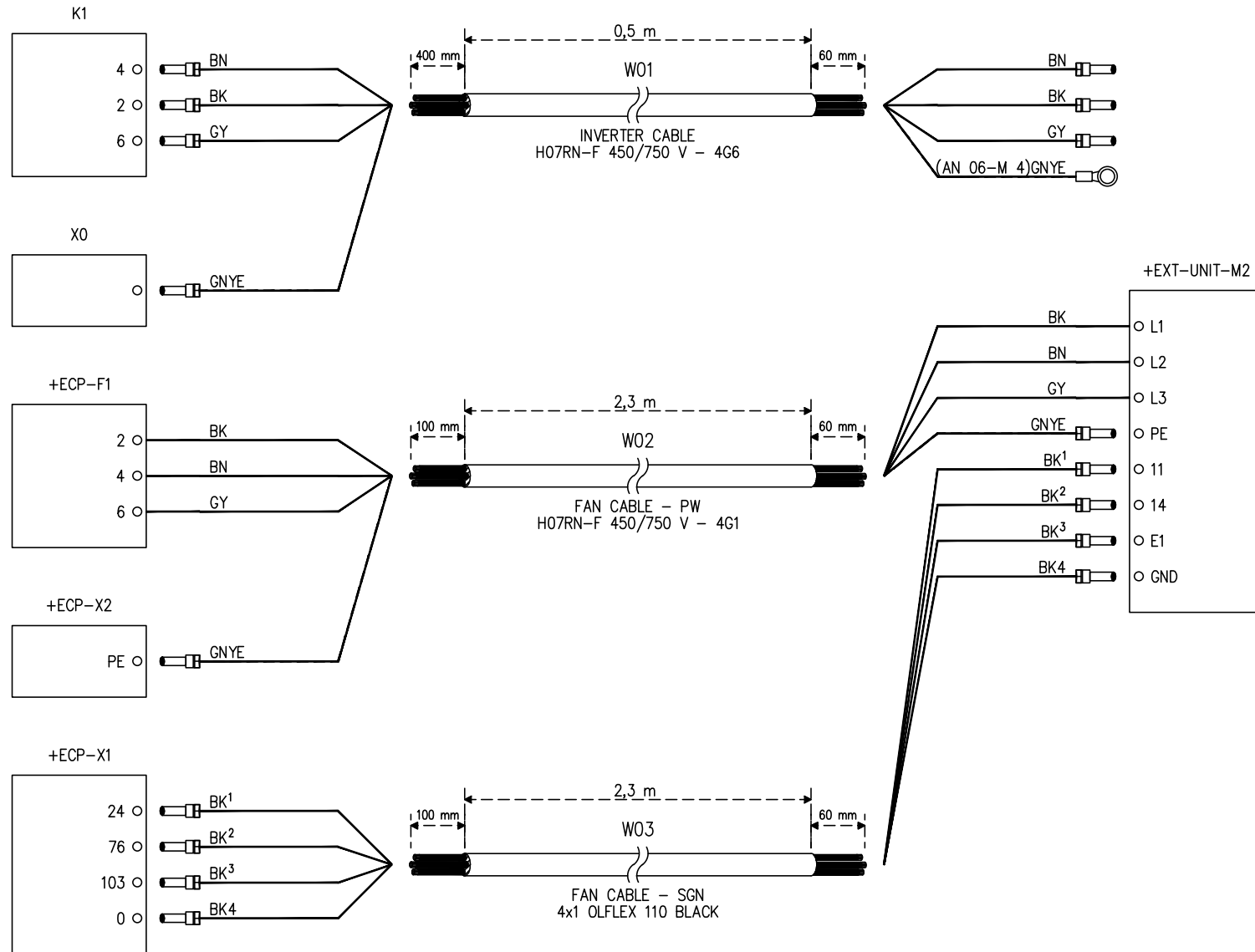
6

7

8



CABLES LIST (INTERNAL USE ONLY)



CABLES LIST

AEU+AIU
39-40-46

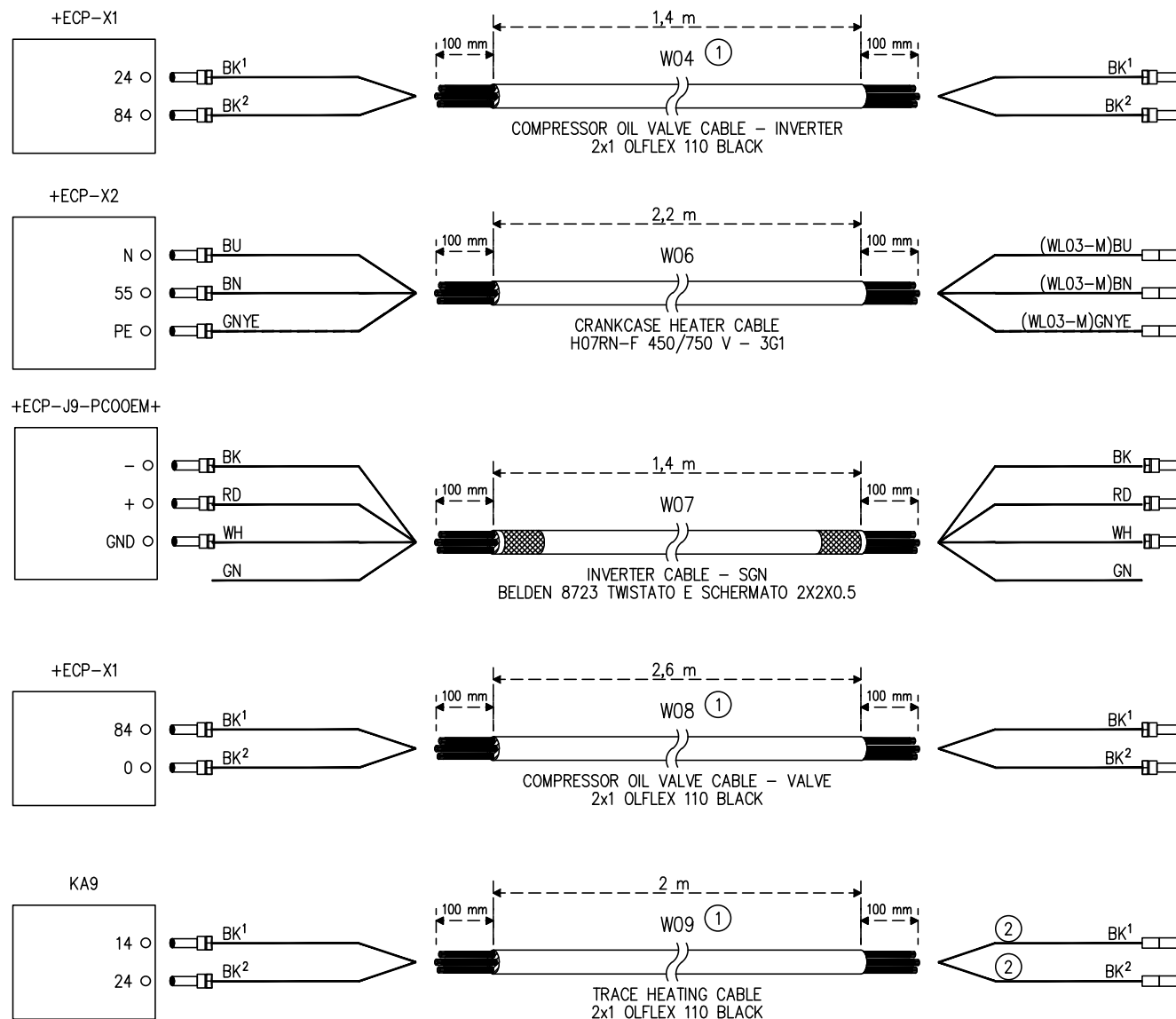
HF620J5980

TOTAL SHEET 29

CONTINUE 25

SHEET 24

CABLES LIST (INTERNAL USE ONLY)



CABLES LIST

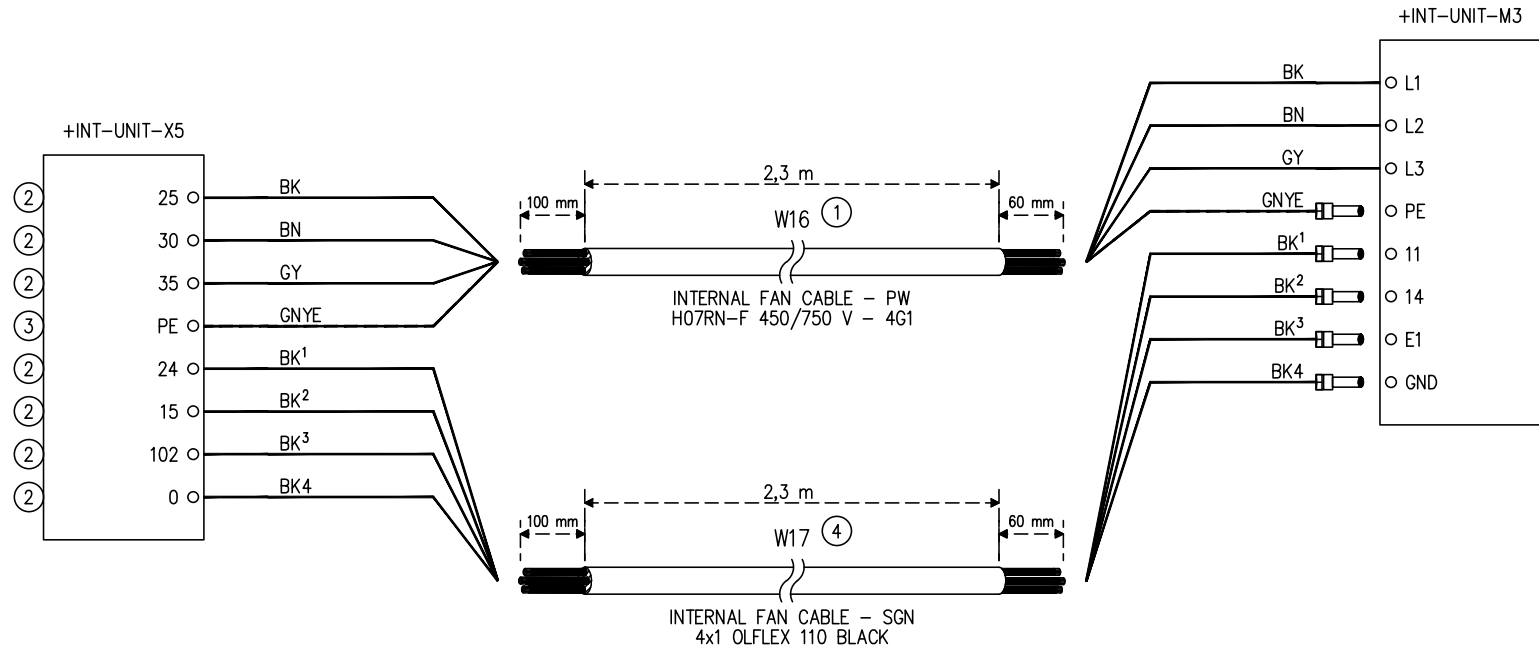
AEU+AIU
39-40-46

HF620J5980

TOTAL SHEET 29

CONTINUE 26

SHEET 25



CABLES LIST

AEU+AIU
39-40-46

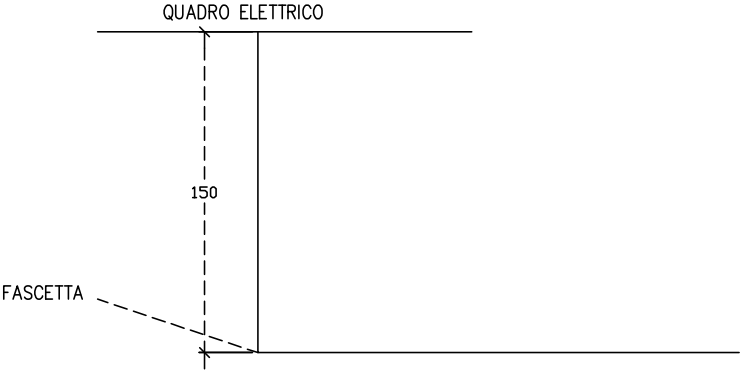
HF620J5980

TOTAL SHEET 29

CONTINUE 27


SHEET 26

GRUPPO CAVI USCITA A1 (VEDI LAYOUT) – MATERIALE IN C/L



SIGLA	DESCRIZIONE	LUNGHEZZA AGGIUNTIVA	SEZIONE CAVO	TIPO TERMINAZIONE
P1	SONDA PRES. ASPIRAZIONE	1850	HIREF	CAVO 3X0.5 CON CONNETTORE INTEGRATO
P2	SONDA PRES. MANDATA	1550	HIREF	CAVO 3X0.5 CON CONNETTORE INTEGRATO
T1	SONDA TEMP. ASPIRAZIONE	1950	HIREF	SONDA NTC (TESTA IN FERRO)
T2	SONDA TEMP. MANDATA	2150	HIREF	SONDA NTC HT (TESTA IN FERRO)
T10	SONDA TEMP. ESTERNA	2250	HIREF	SONDA NTC (TESTA IN FERRO)
Y1	VALVOLA INVERSIONE CICLO	1650	HIREF	BOBINA
Y8	VALVOLA SOLENOIDE	2250	HIREF	CONNETTORE ISO 4400 2P+T

MISURE IN mm
USCITA GRUPPO CAVI DAI PASSACAVI INDICATI CON A1
ESEMPIO DETERMINAZIONE LUNGHEZZA CAVI
–PER P1 LA LUNGHEZZA DEL CAVO SARA’ 150+1850
–PER T1 LA LUNGHEZZA DEL CAVO SARA’ 150+1950

REVISION			DATE	06-12-2022					TOTAL SHEET 29	
LAST	DATE	BY	DRAW.	NP1					CONTINUE 28	
			CHECK	FF1						
			APPR.	MM						
			CABLES LIST							
			AEU+AIU 39-40-46			HF620J5980				SHEET 27

	1	2	3	4	5	6	7	8					
	NOTES (INTERNAL USE ONLY)												
A	1	UTILIZZARE SOLO CANALINE A DENTI STRETTI. PREDISPORRE TUTTI I PRESSACAVI E PASSACAVI IN GOMMA INDICATI DA LAYOUT. DARE A CORREDO CAVO SCHERMATO PER ALIMENTAZIONE COMPRESSORE – REALIZZARE KIT CAVO HF69002608. DARE A CORREDO ETICHETTATURA PER COMPONENTI F2, F3 E F4. NON FORNIRE Q1, VERRA’ MONTATO A BORDO LINEA. ETICHETTARE IL FUSIBILE F2. UTILIZZARE CAVO HF69006050 PER LA REALIZZAZIONE DEL CONNETTORE XC1 E RELATIVI COLLEGAMENTI E NUMERARE I FILI DEL CONNETTORE XC1. IL CONNETTORE XC1 NON è UTILIZZATO.							A				
	2												
	3												
	4												
	5												
	6												
	7												
B								B					
C								C					
D								D					
E								E					
F	REVISION		DATE	06-12-2022	<div>Airone</div>			INTERNAL NOTES		TOTAL SHEET 29		F	
	LAST	DATE	BY	DRAW.				NP1			CONTINUE 29		
				CHECK				FF1					
				APPR.				MM			SHEET 28		
	1	2	3	4	5	6	7	8					

	1	2	3	4	5	6	7	8	
A	REVISION HISTORY (ONLY FOR INTERNAL USE)								A
	REVISION	DATE	MODIFICATIONS					BY	
	REV.\	06-12-2022	- PRIMA VERSIONE					NP1	
B									B
C									C
D									D
E									E
F	REVISION		DATE	06-12-2022	<div> <div> <div>RFVISION HISTORY</div> <div> <div>AEU+AIU</div> <div>39-40-46</div> </div> <div>HF620J5980</div> </div> </div>				TOTAL SHEET 29
	LAST	DATE	BY	DRAW. NP1					CONTINUE
				CHECK FF1					SHEET
				APPR. MM					29
	1	2	3	4	5	6	7	8	